

PHILCO

PHILCO for 1942

brings you

**AMERICA'S GREATEST RADIO
AND PHONOGRAPH VALUES!**

Leadership in Value has won
12 Straight Years of Leader-
ship for Philco . . . Philco
Scores Again for 1942! Look
them over, model for model
. . . and judge for yourself!

*A Startling Achievement of
Philco Engineers . . .*

**THE EXCLUSIVE PHILCO
FM SYSTEM**

A new, exclusive circuit arrangement which makes FM *another tuning band in the regular radio circuit*, just like the Standard and Short-Wave Bands. It permits use of all the tubes on all the bands, giving you FM reception without sacrifice of tone and performance on Standard and Short-Wave programs . . . *all at reasonable cost!*

Completely New and Original!

The Philco FM System is based on an entirely new circuit arrangement for Frequency Modulation reception. It is an *exclusive* product of Philco research and inventive genius . . . *only Philco has it!*

New XXFM Tube

The development of a simple, practical radio receiver that combines all broadcasting services into a single circuit arrangement presented difficult problems which centered around noise reduction. Philco attacked the heart of the problem by developing an entirely new radio tube . . . the *XXFM Balanced Detector Tube*.

Separate Built-In FM Aerial

1942 Philco Radios offering FM reception have a separate built-in aerial, specially tuned to the FM channel. Requires no attention whatever. The FM aerial is switched in automatically when you set the receiver for the FM band.

Separate Bass and Treble Controls

In order to give you the highest possible benefits from FM reception in fidelity of tone, Philco offers in most models separate bass and treble tone controls. This gives an unlimited variety of tone adjustments to suit your preference and enables you as well to make perfect adjustments for the tonal characteristics of any station or any program.

Just Push a Button to Tune In FM

The 1942 Philco offers standard broadcasts, short-wave and FM all in a single circuit arrangement, operated from a single set of controls. All you do to switch to the FM band is to push a button. Utterly simple and easy to operate!

The FM band is calibrated to agree with FM station numbers! You need not bother with wave length or frequency. The station call letters themselves tell you where to find that station on the dial. *Another Philco first!*



**Only Philco has the
Exclusive Philco FM System!**

The Famous
PHILCO
Beam-of-Light
RADIO-PHONOGRAPH

**A Sensational Success in
Tone, Performance and Sales!**

One year ago, Philco engineers startled the radio world with a new kind of radio-phonograph that *plays any record on a Beam of Light* . . . bringing to the phonograph user new delights in the enjoyment of recorded music. The Philco Photo-Electric Radio-Phonograph became a sensation and a *radio-phonograph sales leader everywhere!* Now, the ordinary phonograph is obsolete and out-of-date. Everywhere, the phonograph of today is the Philco Photo-Electric Radio-Phonograph!

Greater Than Ever for 1942

Refinements in pick-up design give an even more sensitive response. Mechanically, too, the Philco Photo-Electric Reproducer has been improved. The mounting of the floating jewel and the featherweight mirror, the adjustment of the photo-electric cell . . . all have been refined and perfected to give maximum efficiency and the utmost reliability and satisfaction. *Only Philco has it!*

No Needles to Change

The Philco Photo-Electric Reproducer is extremely light and floats gently in the record grooves. In normal use, its rounded jewel lasts from 8 to 10 years.

Longer Record Life

The "Beam-of-Light" principle eliminates wear because it eliminates work. No grinding or gouging of record grooves. You can play and enjoy your most valuable records as much as 700 times without fear of wear . . . 10 times longer than before!

New Purity of Tone

Surface noise and needle talk no longer mar the purity of tone! You hear *all* the beauty of your records; rich deep "lows" without sacrifice of clear, brilliant "highs."

New Improved Philco

TILT-FRONT CABINET

For 1942, Philco designers have improved Philco's famous invention . . . the Tilt-Front Cabinet. The sliding mechanism has been made more rigid and under more positive control. It brings the turntable forward at a constant level. An Automatic Interior Light illuminates the turntable.

No lid to lift; no dark, unhandy compartment; no need to remove decorations to reach the phonograph. Just tilt forward the grille, place your records and tilt it back again.

Only Philco Has It!

*For 1942, Philco Announces
A Sensational New*

AUTOMATIC RECORD CHANGER

with the
**EXCLUSIVE STROBOSCOPE
PITCH and TEMPO CONTROL**

Another triumph of Philco research and inventive genius . . . a completely new SYSTEM of operation, bringing you finer tone and new enjoyment of the beauties of recorded music!

More automatic operation than ever before . . . loading and unloading made utterly simple. No posts to turn, no blades to lift. Plays 12 ten-inch or 10 twelve-inch records. Tone Arm adjusts itself automatically. No controls to set . . . new, gentle operation. Your most valuable records are safe; nothing to chip them; no danger of damage. Hear your records with absolute fidelity of pitch. Adjust the tempo of your records to suit your own taste. For every music lover, an important contribution to the fuller enjoyment and more faithful reproduction of recorded music!

Philco Designed . . . Philco Built . . .

Owned Exclusively by Philco . . .

Only Philco Has It!

Exclusive Stroboscope Pitch and Tempo Control

For the first time, records can be played with *absolute fidelity of pitch*, exactly as they were rendered in the recording studio! Using the famous Stroboscopic principle, a Neon Speed-Meter on the turntable enables you to check the speed of the motor. And a Tempo Control enables you to adjust its speed. An important contribution to the fuller enjoyment and more faithful reproduction of recorded music. *Only Philco Has It!*

New Philco Inventions Make **HOME RECORDING**

**Easier, More Lifelike and More
Fun Than Ever!**

Now, with the Exclusive Stroboscope Pitch and Tempo Control, you may adjust the speed of the motor to compensate for the *extra pressure of the cutting arm* when making the record and the *lighter pressure of the reproducing arm* when playing the record. The result is an amazing, true-to-life quality that is impossible with any other method of Home Recording.

New Phonograph Motor Makes Home Recordings Twice as Long!

Since the motor in the new Philco Radio-Phonograph can be adjusted to play not only at Normal speed but also at Slow speed ($33\frac{1}{3}$ to 39 R.P.M.), the amount of music or speech you can get on a record of any given size *will play twice as long*.

*The Philco Home Recording Unit is optional equipment
with any Philco Automatic Record-Changer Model.*

MANY OTHER NEW PHILCO IMPROVEMENTS

New Double I. F. Circuit

Startling improvements in the famous Philco Double I.F. Circuit make radio performance in Philco Radios and Radio-Phonographs greater than ever for 1942. Sensitivity increased by 4 to 1 . . . noise reduced by 5 to 1 . . . cross talk reduced by 20 to 1!

New Built-In Super Aerial System

Amazing increase in sensitivity on both Standard and Short-Wave reception is achieved by a combination of a newly-developed noise-reducing Low Impedance Built-In Loop Aerial with the new Philco Double I.F. Circuit. Aerial is fully rotatable to permit adjustment against noise and interference. Just plug in and play! *Only Philco has it!*

Complete Electric Push-Button Operation

Philco brings you *complete* operation of your radio by Electric Push-Buttons. In a 10-button model with three tuning bands, for instance, 6 buttons are for tuning of favorite standard broadcast stations, 3 for band switching and 1 for "OFF." *Any button* turns radio on and gives you at once the band or station you wish without further adjustment. Pushing any band button switches you to manual tuning on the band you select.

New Featherweight Tone Arm with Retractable Permanent Jewel

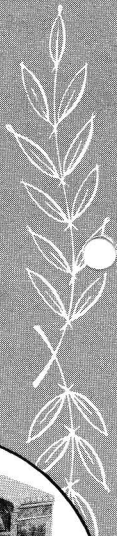
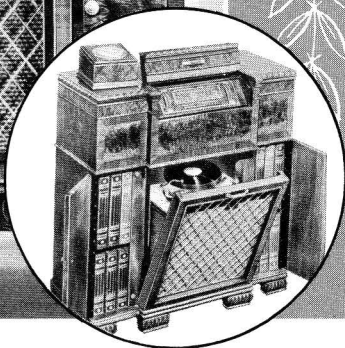
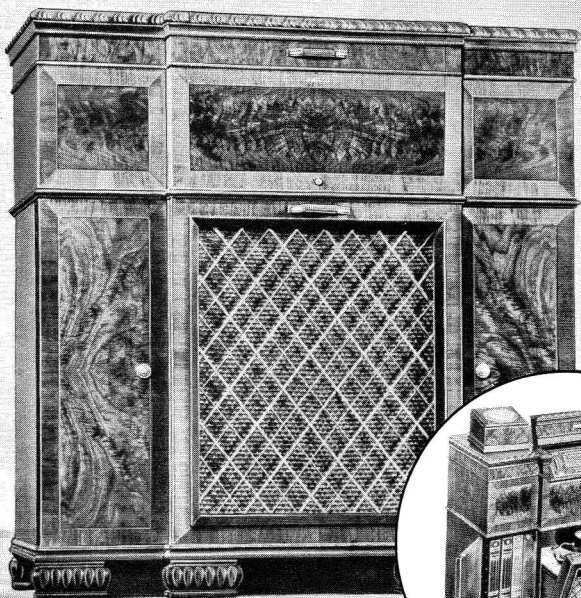
In its lower-priced 1942 Radio-Phonograph models with crystal pick-up, Philco brings you an extremely lightweight Tone Arm with a Permanent Retractable Jewel. *No Needles to change!* Retractable mounting avoids injury to Jewel and records. *Only Philco has it!*

Beautiful New Cabinets

The most beautiful Philco has ever produced! Whether you prefer the graceful dignity of period design or the sparkling beauty of present day trends, you'll find just what you want in the 1942 Philco line . . . at any price you wish to pay.

NEW 1942
PHILCO
PHOTO-ELECTRIC
RADIO-
PHONOGRAPHS

**Play Any
Record on a
Beam of Light!**



PHILCO 1016 PHOTO-ELECTRIC RADIO-PHONOGRAPH.

Wireless Remote Control. Philco Photo-Electric Reproducer. Sixteen Philco tubes, including XXFM tube, two XXL tubes and Loktal tubes. Philco De Luxe Automatic Record Changer. Variable-Speed Phonograph Motor. Stroboscope Pitch and Tempo Control. Special Phonograph Circuit. Philco Tilt-Front Cabinet with Interior Light. Built-In Super Aerial System. Exclusive Philco FM System. Separate Built-In FM Aerial. Separate Bass and Treble Controls. Complete Electric Push-Button Operation; 12 Buttons. Any button turns radio on. Concert Grand Speaker. Push-Pull Beam Power Pentode Audio System. Automatic Volume Control. Milled Edge Disc Controls. Covers Standard American Stations, Day and Night American and Foreign Short-Wave, State Police, Aircraft, Ship and Amateur and FM (Frequency Modulation) Broadcasts. Home Recording Unit optional. Beautiful Georgian Cabinet in Walnut. *Cabinet dimensions: 42" high, 41" wide, 17 $\frac{3}{8}$ " deep.*

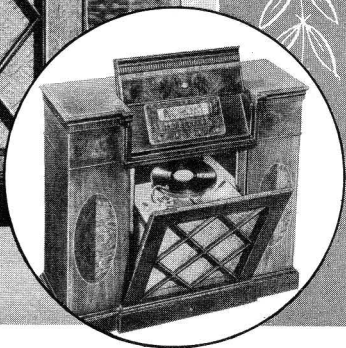
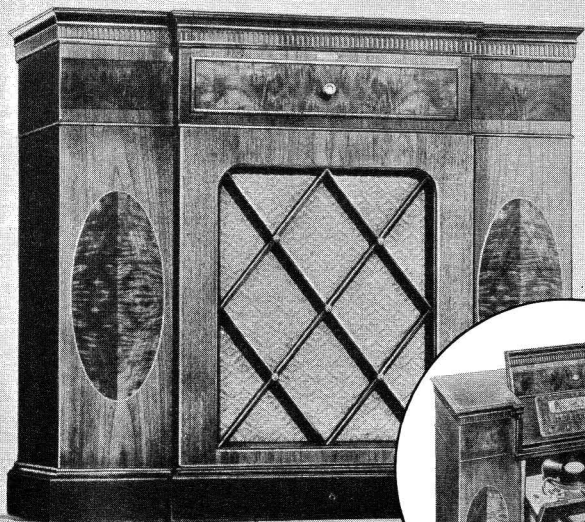
Price **500⁰⁰**



PHILCO 1015 PHOTO-ELECTRIC RADIO-PHONOGRAPH.

Philco Photo-Electric Reproducer. Twelve Philco tubes, including XXFM tube, XXL tubes and Loktal tubes. Philco De Luxe Automatic Record Changer. Variable-Speed Phonograph Motor. Stroboscope Pitch and Tempo Control. Special Phonograph Circuit. Philco Tilt-Front Cabinet with Interior Light. Built-In Super Aerial System. Exclusive Philco FM System. Separate Built-In FM Aerial. Illuminated Horizontal Dial. Separate Bass and Treble Controls. Complete Electric Push-Button Operation; 12 Buttons. Concert Grand Speaker. Push-Pull Beam Power Pentode Audio System. Automatic Volume Control. Milled Edge Disc Controls. Covers Standard American Stations, Day and Night American and Foreign Short-Wave, State Police, Aircraft, Ship and Amateur and FM (Frequency Modulation) Broadcasts. Home Recording Unit optional. Exquisite 18th Century Georgian Cabinet in Walnut or Mahogany. *Cabinet dimensions: 38 $\frac{7}{8}$ " high, 36" wide, 16 $\frac{1}{4}$ " deep.*

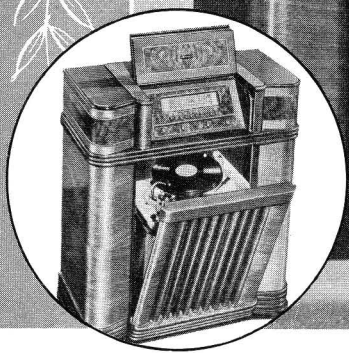
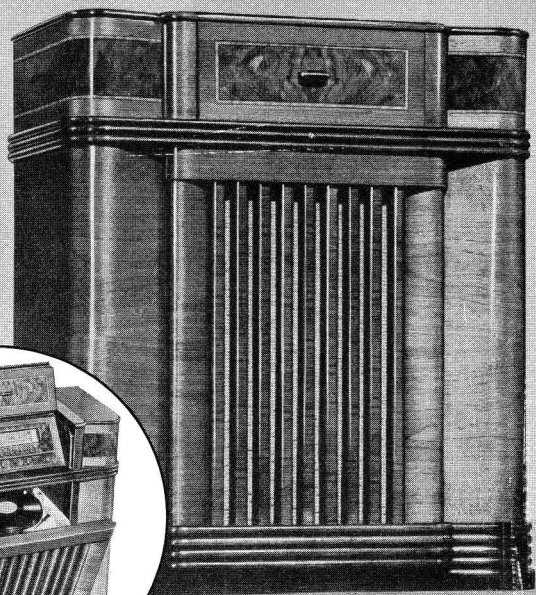
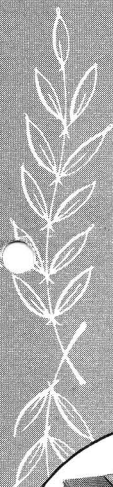
Price **390⁰⁰**



PHILCO 1013 PHOTO-ELECTRIC RADIO-PHONOGRAPH.

Philco Photo-Electric Reproducer. Ten Philco tubes, including XXFM tube, XXL Converter tube and Loktal tubes. Philco Automatic Record Changer. Variable-Speed Phonograph Motor. Stroboscope Pitch and Tempo Control. Special Phonograph Circuit. Philco Tilt-Front Cabinet with Interior Light. Philco Built-In Super Aerial System. Exclusive Philco FM System. Separate Built-In FM Aerial. Illuminated Horizontal Dial. Separate Bass and Treble Controls. Complete Electric Push-Button Operation; 10 Buttons. Any button turns radio on. Concert Grand Speaker. Push-Pull Beam Power Pentode Audio System. Automatic Volume Control. Covers Standard American Stations, Day and Night American and Foreign Short-Wave, State Police, Aircraft, Ship and Amateur and FM (Frequency Modulation) Broadcasts. Home Recording Unit optional. Authentic Hepplewhite Cabinet in Walnut or Mahogany. *Cabinet dimensions: 36" high, 40" wide, 15" deep.*

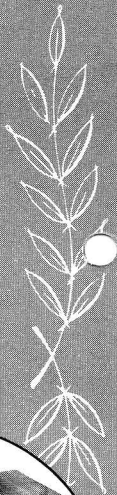
Price **244⁹⁵**



PHILCO 1012 PHOTO-ELECTRIC RADIO-PHONOGRAPH.

Philco Photo-Electric Reproducer. Ten Philco tubes, including XXFM tube, XXL Converter tube and Loktal tubes. Philco Automatic Record Changer. Variable-Speed Phonograph Motor. Stroboscope Pitch and Tempo Control. Special Phonograph Circuit. Philco Tilt-Front Cabinet with Interior Light. Philco Built-In Super Aerial System. Exclusive Philco FM System. Separate Built-In FM Aerial. Illuminated Horizontal Dial. Separate Bass and Treble Controls. Complete Electric Push-Button Operation; 10 Push-Buttons. Any button turns radio on. Concert Grand Speaker. Push-Pull Beam Power Pentode Audio System. Automatic Volume Control. Covers Standard American Stations, Day and Night American and Foreign Short-Wave, State Police, Aircraft, Ship and Amateur and FM (Frequency Modulation) Broadcasts. Home Recording Unit optional. Walnut Console Cabinet of distinctive beauty. *Cabinet dimensions: 37¼" high, 31¾" wide, 15¼" deep.*

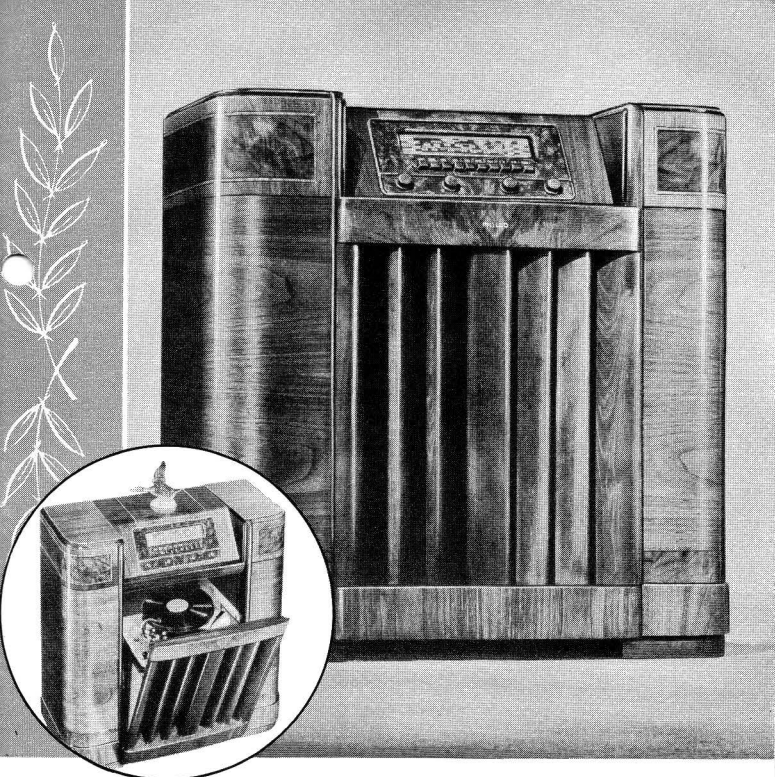
Price 199⁹⁵.....



PHILCO 1011 PHOTO-ELECTRIC RADIO-PHONOGRAPH.

Philco Photo-Electric Reproducer. Ten Philco tubes, including XXL Converter tube and Loktal tubes. Special Phonograph Circuit. Philco Automatic Record Changer. Variable-Speed Phonograph Motor. Stroboscope Pitch and Tempo Control. Philco Tilt-Front Cabinet with Interior Light. Philco Double I.F. Radio Circuit. Philco Built-In Super Aerial System. Complete Electric Push-Button Operation; 10 Buttons. Any button turns radio on. Separate Bass and Treble Controls. Concert Grand Speaker. Push-Pull Beam Power Pentode Audio System. Automatic Volume Control. Illuminated Horizontal Dial. Covers Standard American Broadcasts, Day and Night American and Foreign Short-Wave Stations, State and City Police Calls, Aircraft, Ship and Amateur Stations. Home Recording Unit optional. Authentic Sheraton Period Cabinet in Walnut or Mahogany. *Cabinet dimensions: 36" high, 38 $\frac{7}{8}$ " wide, 14 $\frac{1}{2}$ " deep.*

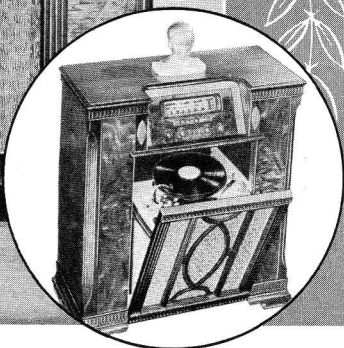
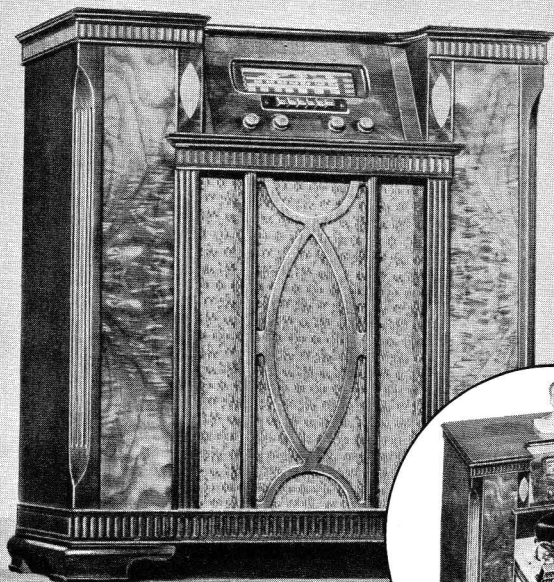
Price 194 95



PHILCO 1010 PHOTO-ELECTRIC RADIO-PHONOGRAPH.

Philco Photo-Electric Reproducer. Ten Philco tubes, including XXL Converter tube and Loktal tubes. Special Phonograph Circuit. Philco Automatic Record Changer. Variable-Speed Phonograph Motor. Stroboscope Pitch and Tempo Control. Improved Philco Tilt-Front Cabinet with Interior Light. Philco Double I.F. Radio Circuit. Philco Built-In Super Aerial System. Complete Electric Push-Button Operation; 10 Push-Buttons. Any button turns radio on. Separate Bass and Treble Controls. Concert Grand Balanced Field Electro-Dynamic Speaker. Push-Pull Beam Power Pentode Audio System. Automatic Volume Control. Illuminated Horizontal Dial. Covers Standard American Broadcasts, Day and Night American and Foreign Short-Wave Stations, State and City Police Calls, Aircraft, Ship and Amateur Stations. Home Recording Unit optional. Gracefully designed Walnut Console Cabinet. *Cabinet dimensions: 35" high, 34" wide, 15 $\frac{3}{4}$ " deep.*

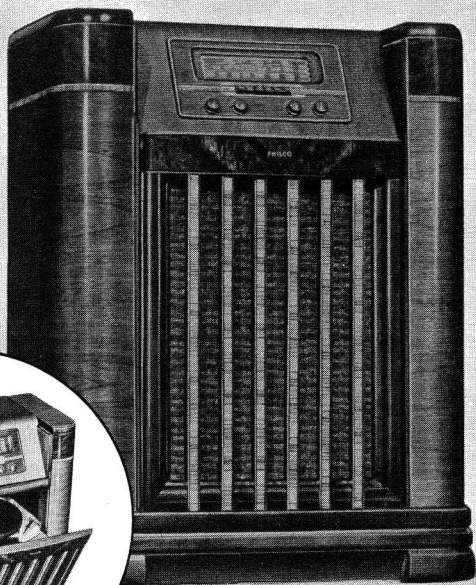
Price 169.95



PHILCO 1009 PHOTO-ELECTRIC RADIO-PHONOGRAPH.

Philco Photo-Electric Reproducer. Nine Philco tubes, including XXL Converter tube and Loktal tubes. Special Phonograph Circuit. Philco Automatic Record Changer. Powerful Variable-Speed Phonograph Motor. Stroboscope Pitch and Tempo Control. Improved Philco Tilt-Front Cabinet with Interior Light. Philco Double I.F. Radio Circuit. Philco Built-In Super Aerial System. 6 Electric Push-Buttons, five for favorite stations, plus one for "On-Off." Illuminated Shifting Band Arrow. Concert Grand Balanced Field Electro-Dynamic Speaker. Push-Pull Pentode Audio System. Combined Bass Compensation and Tone Control. Automatic Volume Control. Illuminated Horizontal Dial. Covers Standard American Broadcasts, Day and Night American and Foreign Short-Wave Stations, State Police Calls. Home Recording Unit optional. Beautiful Period Style Walnut Cabinet. Cabinet dimensions: 36" high, 32 $\frac{1}{4}$ " wide, 14 $\frac{3}{4}$ " deep.

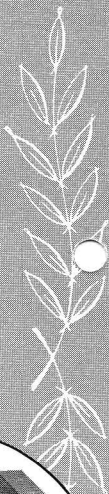
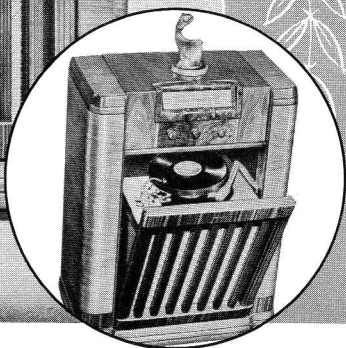
Price 164 95



PHILCO 1008 PHOTO-ELECTRIC RADIO-PHONOGRAPH.

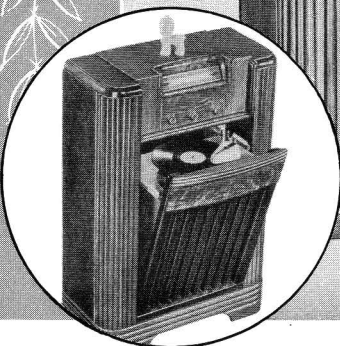
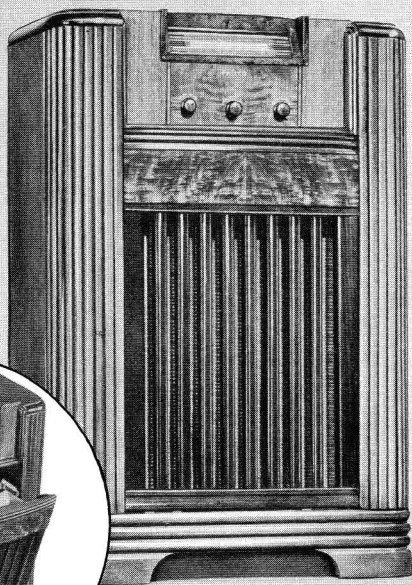
Philco Photo-Electric Reproducer. Nine Philco tubes, including noise-reducing XXL Converter tube, and Loktal tubes. Special Phonograph Circuit. New Philco Automatic Record Changer. Powerful Variable-Speed Phonograph Motor. Stroboscope Pitch and Tempo Control. Improved Philco Tilt-Front Cabinet with Interior Light. Philco Double I.F. Radio Circuit. Philco Built-In Super Aerial System. 6 Electric Push-Buttons; five for favorite stations, plus one for "On-Off." Illuminated Shifting Band Arrow. Concert Grand Balanced Field Electro-Dynamic Speaker. Push-Pull Pentode Audio System. Combined Bass Compensation and Tone Control. Automatic Volume Control. Illuminated Horizontal Dial. Covers Standard American Broadcasts, Day and Night American and Foreign Short-Wave Stations, State Police Calls. Home Recording Unit optional. Large, handsome Console Cabinet of beautiful Walnut woods. *Cabinet dimensions: 38" high, 29 $\frac{3}{4}$ " wide, 15 $\frac{1}{8}$ " deep.*

Price 145⁰⁰



PHILCO 1006 RADIO-PHONOGRAPH. Featherweight Tone Arm with Permanent Jewel. Seven Philco tubes, including Loktal tubes. New Philco Automatic Record Changer; plays ten 12-inch or twelve 10-inch records at one loading. Powerful Variable-Speed Phonograph Motor. Stroboscope Pitch and Tempo Control. Improved Philco Tilt-Front Cabinet. R.F. Stage. Philco Built-In Super Aerial System. Beam Power Pentode Audio System. Slide-Type Tone Control. Oversize Electro-Dynamic Speaker. Automatic Volume Control. 3-Color Illuminated Horizontal Dial. Gets Standard American Broadcasts. Home Recording Unit optional. Beautiful Walnut cabinet. *Cabinet dimensions: 37" high, 27½" wide, 15⅞" deep.*

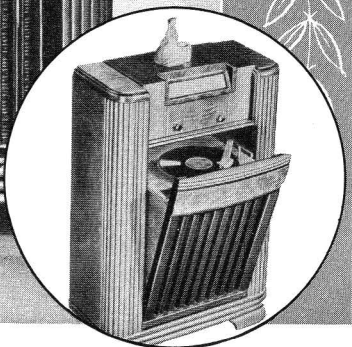
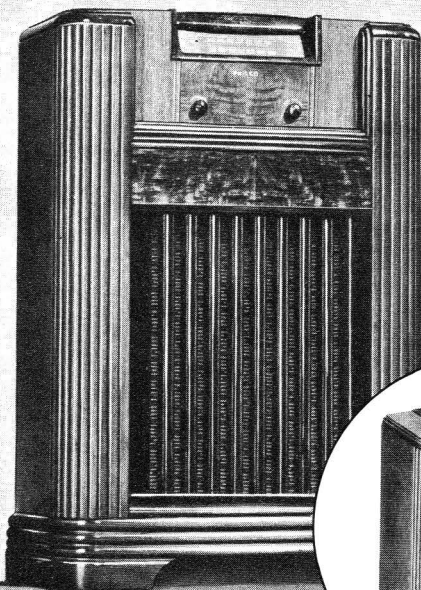
Price ~~\$~~ 100 00



PHILCO 1005 PHOTO-ELECTRIC RADIO-PHONOGRAPH.

Philco Photo-Electric Reproducer. Seven Philco tubes, including noise-reducing Philco XXD Converter tube and Loktal tubes. Philco Double I.F. Radio Circuit. Philco Built-In Super Aerial System. Improved Philco Tilt-Front Cabinet. Self-Starting Phonograph Motor. Oversize Dynamic Speaker. Beam Power Pentode Audio System. Slide-Type Tone Control. Automatic Volume Control. Plays 10-inch and 12-inch records. Fixed Bass Compensation. 3-Color Illuminated Horizontal Dial. Covers Standard American Broadcasts, Day and Night American and Foreign Short-Wave Stations, State Police Calls. Lovely Walnut Console Cabinet. *Cabinet dimensions: 37" high, 24 $\frac{7}{8}$ " wide, 11 $\frac{1}{2}$ " deep.*

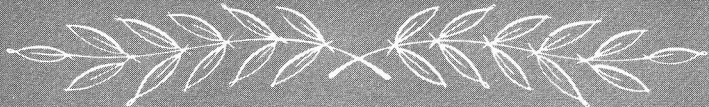
Price 89 95



PHILCO 1004 RADIO-PHONOGRAPH. Featherweight Tone Arm with Permanent Jewel. No needles to change; permanent jewel lasts for many thousands of playings. Six Philco tubes, including Loktal tubes. Improved Philco Tilt-Front Cabinet. Oversize Electro-Dynamic Speaker. R.F. Stage. Philco Built-In Super Aerial System. Two-Way Switch and Volume Control. Beam Power Pentode Audio System. Slide-Type Tone Control. Automatic Volume Control. Self-Starting Phonograph Motor. Plays 10-inch and 12-inch Records. 3-Color Illuminated Horizontal Dial. Covers Standard American Broadcasts. Beautiful Walnut Console Cabinet. *Cabinet dimensions: 37" high, 24 $\frac{7}{8}$ " wide, 11 $\frac{1}{2}$ " deep.*

Price

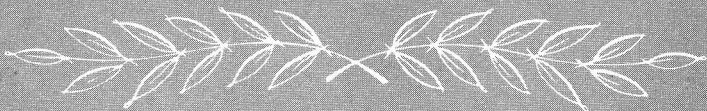
59⁹⁵



PHILCO 1003 PHOTO-ELECTRIC RADIO-PHONOGRAPH.

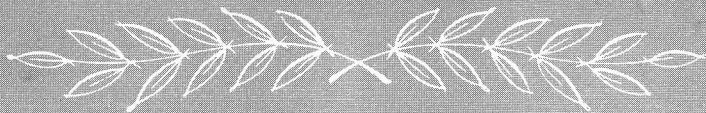
Philco Photo-Electric Reproducer. Seven Philco tubes, including noise-reducing Philco XXD Converter tube and Loktal tubes. Philco Built-In Super Aerial System. Philco Double I.F. Radio Circuit. Plays 10-inch and 12-inch records, with lid closed. Improved Dynamic Speaker. Beam Power Pentode Audio System. Slide-Type Tone Control. Self-Starting Phonograph Motor. Fixed Bass Compensation. Automatic Volume Control. 3-Color Illuminated Horizontal Dial. Covers Standard American Broadcasts, Day and Night American and Foreign Short-Wave Stations, State Police Calls. New, large-size Walnut Table Cabinet. *Cabinet dimensions: 11 $\frac{3}{4}$ " high, 18 $\frac{1}{4}$ " wide, 13 $\frac{5}{8}$ " deep.*

~~\$~~ 65⁰⁰
Price



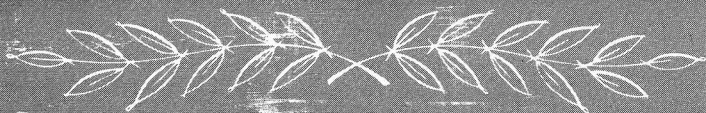
PHILCO 1002 RADIO-PHONOGRAPH. Featherweight Tone Arm with Permanent Jewel. No needles to change; permanent jewel lasts for many thousands of playings. Six Philco tubes, including Loktal tubes. R.F. Stage. Philco Built-In Super Aerial System. Improved Electro-Dynamic Speaker. Beam Power Pentode Audio System. Two-Way Switch and Volume Control. Slide-Type Tone Control. Automatic Volume Control. Self-Starting Phonograph Motor. Plays 10-inch and 12-inch records, with lid closed. Covers Standard American Broadcasts. Beautifully designed Walnut Table Cabinet. *Cabinet dimensions: 11 $\frac{1}{4}$ " high, 16 $\frac{3}{4}$ " wide, 13 $\frac{3}{8}$ " deep.*

~~8~~ 44 95
Price



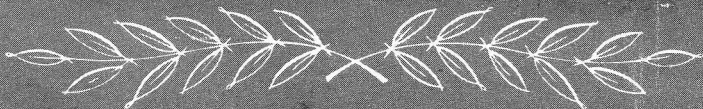
PHILCO 1001 RADIO-PHONOGRAPH. A low-priced table model that offers the *plus value* of Philco engineering! Full, rich record tone; powerful radio reception. Special Philco Phonograph Circuit. Five Philco tubes, including Loktal tubes. New, Lightweight, Crystal Tone Arm. Plays 10-inch and 12-inch records. Powerful 6-inch Oval Electro-Dynamic Speaker. Built-In Super Sensitive Aerial System. Beam Power Pentode Audio System. Two-Way Switch and Volume Control. Slide-Type Tone Control. Automatic Volume Control. Self-Starting Phonograph Motor. Covers full Standard American Broadcast range up to 1600 kilocycles. Handsome, sturdy Table Cabinet of Walnut and Birch grain woods. *Cabinet dimensions: 10 $\frac{3}{4}$ " high, 16 $\frac{7}{8}$ " wide, 13 $\frac{1}{2}$ " deep.*

Price 39.95



PHILCO 620P PHOTO-ELECTRIC PHONOGRAPH with Permanent Jewel—no needles to change. Special Phonograph Circuit with 6 Philco tubes, including Loktal tubes. Specially designed full 9-inch Oval Electro-Dynamic Speaker. Push-Pull Pentode Audio System. Plays 10-inch and 12-inch records, with lid closed. Variable Tone Control. Bass Compensation. Noiseless, Self-Starting Phonograph Motor. A tastefully designed cabinet in beautiful sliced Walnut, with solid Walnut front and graceful inlays. *Cabinet dimensions: 12¼" high, 18¼" wide, 13¾" deep.*

Price 59 95

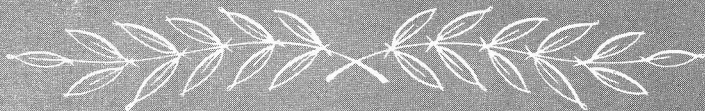


PHILCO RP-2 WIRELESS RECORD PLAYER that brings you the enjoyment of your favorite recorded music, through your radio.

You don't have to connect this Philco Record Player to your radio instrument in any way, and yet it reproduces records through your radio circuit with a finer, clearer tone quality than has ever been possible in a wired record player. It plays both 10-inch and 12-inch records, with the lid closed, reducing needle noise to a minimum. Plays automatically; lift the tone arm and the turntable starts, replace the tone arm and the turntable stops.

Brand-new in design, the highly-finished wood cabinet is trimmed with smart Zebrano graining overlays on the lid; a band of the same material serves as an effective trim for the cabinet itself. *Cabinet dimensions: 5 $\frac{3}{4}$ " high, 14 $\frac{7}{8}$ " wide, 13 $\frac{3}{4}$ " deep.*

Price **22 50**



PHILCO RP-1 WIRELESS RECORD PLAYER. A big-value Wireless Record Player that gives you all the features of the RP-2 except that the Walnut finish cabinet is not equipped with a lid. Plays records through your radio without wires or connections of any kind. It plays both 10-inch and 12-inch records. Plays automatically; lift the tone arm and the turntable starts, replace the tone arm and the turntable stops. *Cabinet dimensions: 3 $\frac{1}{4}$ " high, 12 $\frac{7}{8}$ " wide, 10 $\frac{5}{8}$ " deep.*

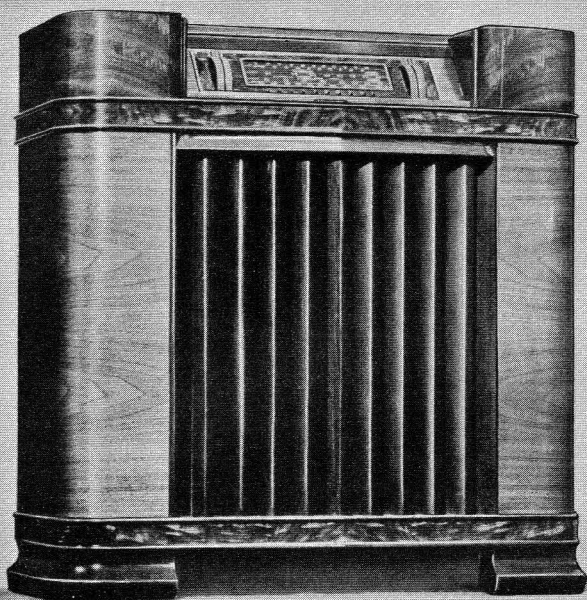
Price 17.50



NEW 1942

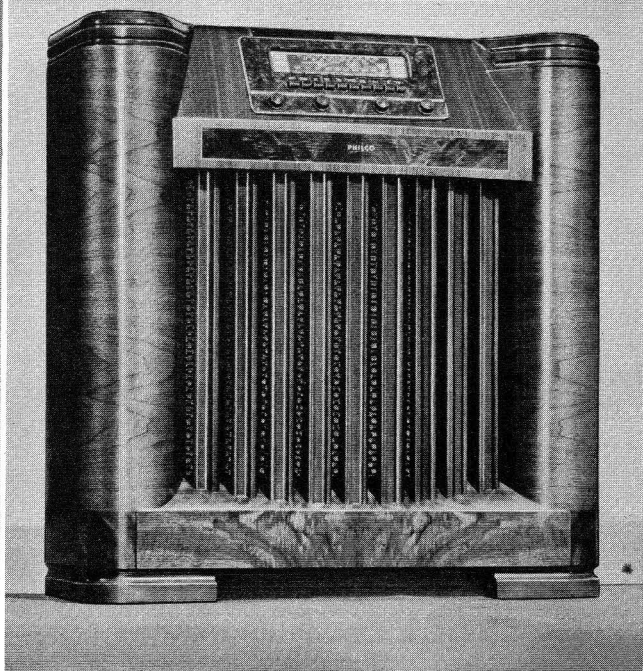
PHILCO
RADIOS

**Better Radios
For All Uses . . .
And FM at
Reasonable Cost!**



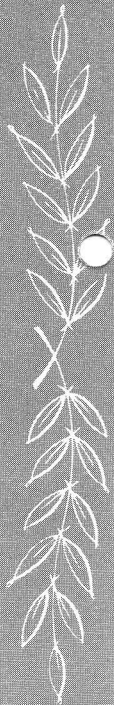
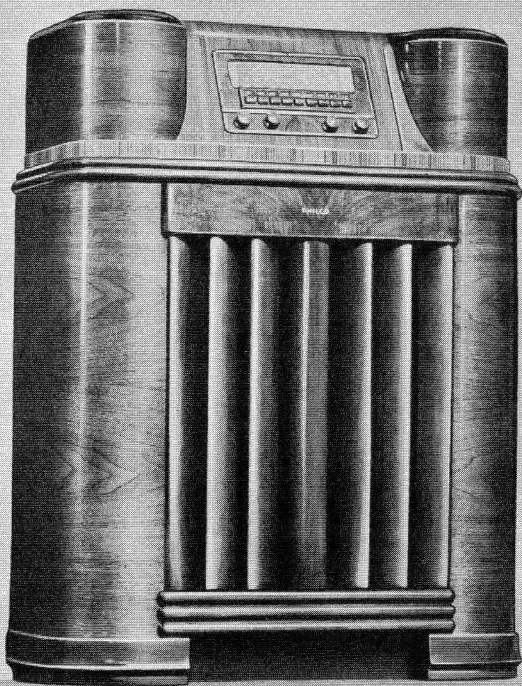
PHILCO 400x. New Philco Double I.F. Radio Circuit. Eleven Philco tubes, including XXFM Balanced Detector tube, 2 noise-reducing XXL Converter tubes and Loktal tubes. Exclusive Philco FM System. Philco Built-In Super Aerial System. Separate Automatic Built-In FM Aerial. Complete Electric Push-Button Operation; 10 Push-Buttons for station tuning and band switching. Any button turns radio on. Push-Pull Pentode Audio System. Illuminated Horizontal Dial. Separate Bass and Treble Controls. Cathedral Balanced Field Electro-Dynamic Speaker. Automatic Volume Control. Covers Standard American Stations, Day and Night American and Foreign Short-Wave Stations, State Police Calls, Aircraft, Ship and Amateur Stations and FM (Frequency Modulation) Broadcasts. Gorgeous Walnut Console Cabinet, Sliding Roll Lid. *Cabinet dimensions: 35½" high, 34½" wide, 14⅞" deep.*

Price 139⁹⁵



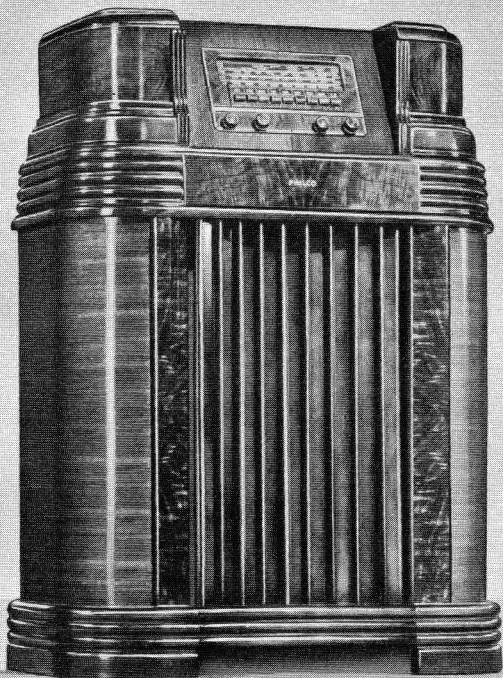
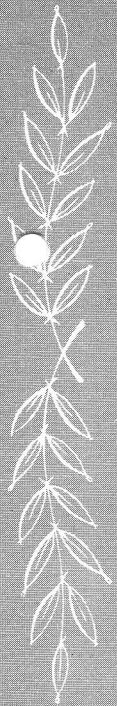
PHILCO 395X. New Philco Double I.F. Radio Circuit. Nine Philco tubes, including XXFM Balanced Detector tube, 2 noise-reducing Philco XXL Converter tubes and Loktal tubes. Exclusive Philco FM System. Philco Built-In Super Aerial System. Complete Electric Push-Button Operation; 10 Push-Buttons for station tuning and band switching. Any button turns radio on. Illuminated Horizontal Dial. Separate Bass and Treble Controls. Separate Built-In FM Aerial. Cathedral Balanced Field Electro-Dynamic Speaker. Push-Pull Pentode Audio System. Automatic Volume Control. Covers Standard American Broadcasts, Day and Night American and Foreign Short-Wave Stations and State Police Calls and FM (Frequency Modulation) Broadcasts. Walnut Console Cabinet of exquisite beauty and charm. *Cabinet dimensions: 35 $\frac{3}{4}$ " high, 33" wide, 12 $\frac{1}{2}$ " deep.*

Price 109⁹⁵



PHILCO 390x. New Philco Double I.F. Radio Circuit. Eight Philco tubes, including XXFM Balanced Detector tube, 2 noise-reducing XXL Converter tubes and Loktal tubes. Exclusive Philco FM System. Philco Built-In Super Aerial System. Illuminated Horizontal Dial. Complete Electric Push-Button Operation; 9 Push-Buttons for station tuning and band switching. Any button turns radio on. Separate Built-In FM Aerial. Separate Bass and Treble Controls. Concert Grand Balanced Field Electro-Dynamic Speaker. Push-Pull Pentode Audio System. Automatic Volume Control. Covers Standard American Broadcasts, Day and Night American and Foreign Short-Wave Stations and State Police Calls and FM (Frequency Modulation) Broadcasts. Handsomely designed Walnut Console Cabinet. *Cabinet dimensions: 39 $\frac{3}{4}$ " high, 30" wide, 12 $\frac{5}{8}$ " deep.*

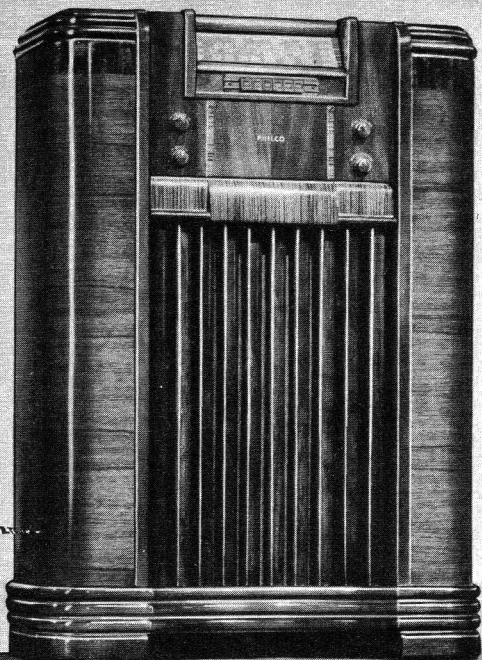
Price 95⁰⁰



PHILCO 380x. New Philco Double I.F. Radio Circuit. Eight Philco tubes, including 2 noise-reducing XXL Converter tubes and Loktal tubes. Philco Built-In Super Aerial System. Complete Electric Push-Button Operation; 9 Push-Buttons for station tuning and band switching. Any button turns radio on. Illuminated Horizontal Dial. Concert Grand Balanced Field Electro-Dynamic Speaker. Push-Pull Pentode Audio System. Separate Bass and Treble Controls. Automatic Volume Control. Covers Standard American Broadcasts, Day and Night American and Foreign Short-Wave Stations, State and City Police Calls, Aircraft, Ship and Amateur Stations. Large, impressive Console Cabinet of highly finished Walnut woods. *Cabinet dimensions: 39½" high, 28⅝" wide, 13" deep.*

Price

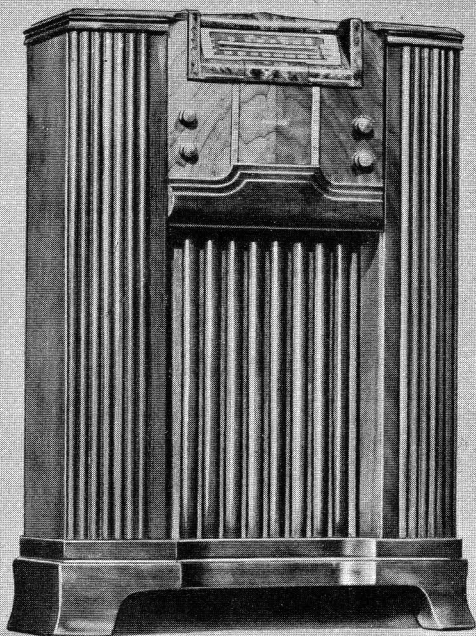
84⁹⁵



PHILCO 365K. New Philco Double I.F. Radio Circuit. Seven Philco tubes, including 2 noise-reducing XXL Converter tubes and Loktal tubes. Philco Built-In Super Aerial System. 6 Electric Push-Buttons, five for favorite stations plus one for "On-Off." Oversize Balanced Field Electro-Dynamic Speaker. Pentode Audio System. Illuminated Shifting Band Arrow. 3-Color Illuminated Horizontal Dial. Variable Tone Control. Automatic Volume Control. Covers Standard American Broadcasts, Day and Night American and Foreign Short-Wave Stations, State and City Police, Aircraft, Ship and Amateur Stations. Distinctive Console Cabinet of costly Walnut woods with Zebrano-grain overlays. *Cabinet dimensions: 37 $\frac{3}{4}$ " high, 27" wide, 10 $\frac{3}{8}$ " deep.*

Price

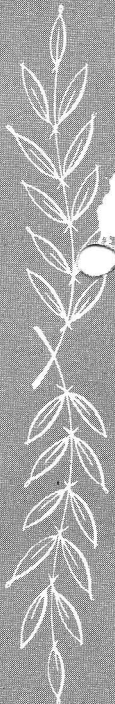
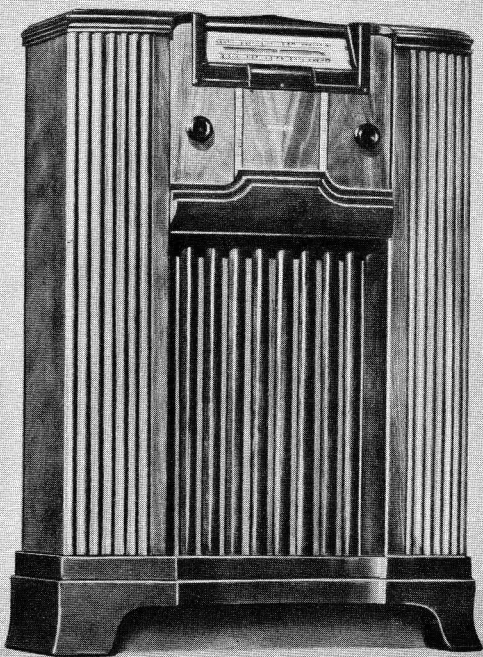
74 95



PHILCO 360F. Philco Double I.F. Radio Circuit. Seven Philco tubes, including 2 noise-reducing XXL Converter tubes and Loktal tubes. Philco Built-In Super Aerial System. Oversize Balanced Field Electro-Dynamic Speaker. 3-Color Illuminated Horizontal Dial. Pentode Audio System. Illuminated Shifting Band Arrow. Variable Tone Control. Automatic Volume Control. Covers Standard American Broadcasts, Day and Night American and Foreign Short-Wave Stations and State Police Calls. Graceful Console Cabinet of costly Walnut woods. *Cabinet dimensions: 36 $\frac{3}{4}$ " high, 26 $\frac{5}{8}$ " wide, 10 $\frac{5}{8}$ " deep.*

Price

64 95



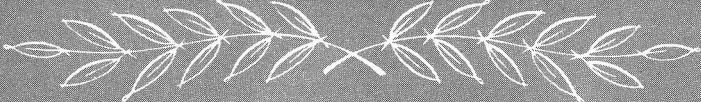
PHILCO 358F. New Philco AC-DC Superheterodyne, newly designed and extremely sensitive. New Philco Double I.F. Radio Circuit; reduces noise by 5 to 1 . . . increases sensitivity by 4 to 1 . . . reduces cross-talk by 20 to 1. Six Philco tubes, including noise-reducing XXD Converter and Oscillator tube and Loktal tubes, invented by Philco engineers. Philco Built-In Super Aerial System. Large, Improved Dynamic Speaker. Beam Power Pentode Audio System. 3-Color Illuminated Horizontal Dial. Automatic Volume Control. Covers Standard American Broadcasts and State Police Calls. Graceful Console Cabinet of costly Walnut woods with Zebrano graining. *Cabinet dimensions: 36 $\frac{3}{4}$ " high, 26 $\frac{5}{8}$ " wide, 10 $\frac{5}{8}$ " deep.*

Price 54 95



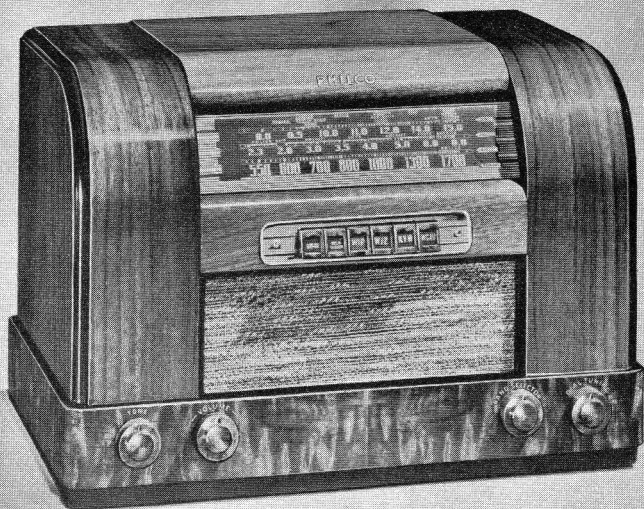
PHILCO 355T. New Philco Double I.F. Radio Circuit. Eight Philco tubes, including XXFM Balanced Detector tube, 2 noise-reducing XXL Converter tubes and Loktal tubes. Exclusive Philco FM System. Philco Built-In Super Aerial System. Separate Automatic Built-In FM Aerial. Complete Electric Push-Button Operation; 9 Push-Buttons for station tuning and band switching. Any button turns radio on. 3-Color Illuminated Horizontal Dial. Separate Bass and Treble Controls. Improved Electro-Dynamic Speaker. Push-Pull Pentode Audio System. Automatic Volume Control. Covers Standard American Stations, Day and Night American and Foreign Short-Wave Stations and State Police Calls and FM (Frequency Modulation) Broadcasts. The Aristocrat of table model cabinets in costly sliced and solid Walnut woods. *Cabinet dimensions: 11 $\frac{3}{8}$ " high, 20" wide, 13" deep.*

Price 67⁵⁰.....



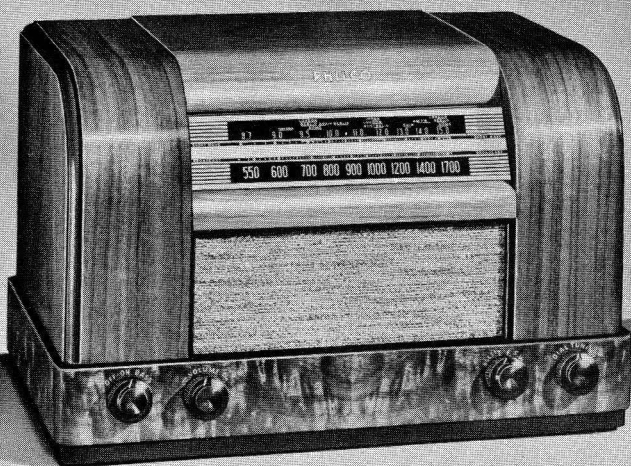
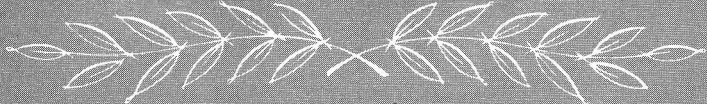
PHILCO 350T. Philco Double I.F. Radio Circuit. Seven Philco tubes, including XXFM Balanced Detector tube, two noise-reducing XXL Converter tubes and Loktal tubes. Exclusive Philco FM System. Philco Built-In Super Aerial System. Separate Automatic Built-In FM Aerial. 6 Electric Push-Buttons; five for favorite stations, plus one for "On-Off." 3-Color Illuminated Horizontal Dial. Illuminated Shifting Band Arrow. Powerful Oval Shape Electro-Dynamic Speaker. Pentode Audio System. Combined Bass Compensation and Tone Control. Automatic Volume Control. Covers Standard American Stations, Day and Night American and Foreign Short-Wave Stations and State Police Calls and FM (Frequency Modulation) Broadcasts. Gorgeous Walnut Table Cabinet of new design. *Cabinet dimensions: 11" high, 18½" wide, 10½" deep.*

Price 54 95



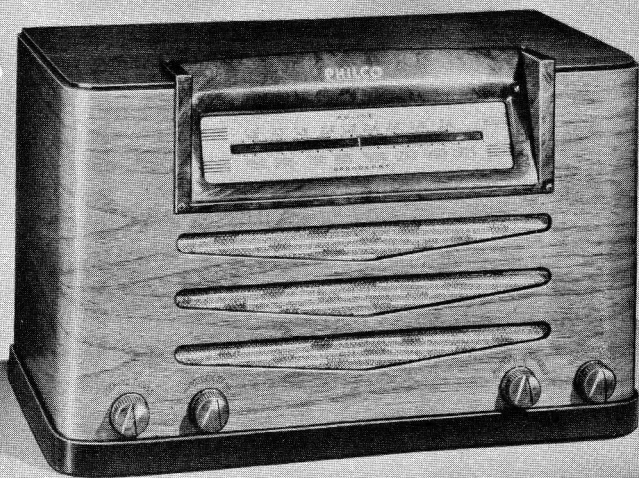
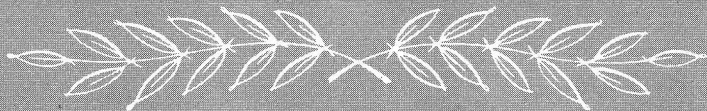
PHILCO 345T. New Philco Double I.F. Radio Circuit. Seven Philco tubes, including 2 noise-reducing XXL Converter tubes and Loktal tubes. Philco Built-In Super Aerial System. Powerful Oval Shape Electro-Dynamic Speaker. 6 Electric Push-Buttons; five for favorite stations plus one for "On-Off." Pentode Audio System. Illuminated Shifting Band Arrow. 3-Color Illuminated Horizontal Dial. Automatic Volume Control. Variable Tone Control. Covers Standard American Broadcasts, Day and Night American and Foreign Short-Wave Stations, State and City Police Calls, Aircraft, Ship and Amateur Stations. Full-size Table Cabinet of lovely sliced Walnut woods. *Cabinet dimensions: 10 $\frac{3}{4}$ " high, 16" wide, 9 $\frac{1}{2}$ " deep.*

Price 42⁵⁰.....



PHILCO 340T. New Philco Double I.F. Radio Circuit; reduces noise by 5 to 1 . . . increases sensitivity by 4 to 1 . . . reduces cross-talk by 20 to 1. Seven Philco tubes, including 2 noise-reducing XXL Converter tubes and Loktal tubes. New Philco Built-In Super Aerial System. Powerful Oval Shape Electro-Dynamic Speaker; brings an amazing increase in speaker efficiency without increase of cabinet space. Pentode Audio System. Illuminated Shifting Band Arrow. 3-Color Illuminated Horizontal Dial. Automatic Volume Control. Variable Tone Control. Covers Standard American Broadcasts, Day and Night American and Foreign Short-Wave Stations and State Police Calls. Walnut Table Cabinet of new flowing design. *Cabinet dimensions: 10" high, 16" wide, 9½" deep.*

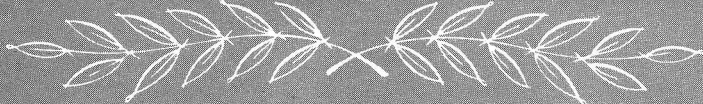
Price 39⁹⁵



PHILCO 335T. New Philco Double I.F. Radio Circuit; reduces noise by 5 to 1 . . . increases sensitivity by 4 to 1 . . . reduces cross-talk by 20 to 1. Seven Philco tubes, including 2 noise-reducing XXL Converter tubes and Loktal tubes, invented by Philco engineers. Philco Built-In Super Aerial System. Powerful Oval Shape Electro-Dynamic Speaker; brings an amazing increase in speaker efficiency without increase of cabinet space. Pentode Audio System. 3-Color Illuminated Horizontal Dial. Automatic Volume Control. Covers Standard American Broadcasts, State and City Police Calls, Night Aircraft and Amateur Stations. Attractive Walnut Table Cabinet. *Cabinet dimensions: 9 $\frac{3}{4}$ " high, 15 $\frac{3}{4}$ " wide, 9 $\frac{1}{8}$ " deep.*

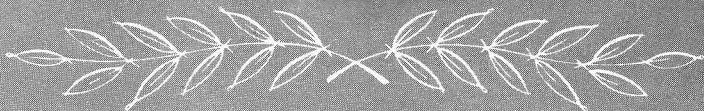
Price

34 ⁹⁵



PHILCO 327T. New Philco AC-DC Double I.F. Radio Circuit; reduces noise by 5 to 1 . . . increases sensitivity by 4 to 1 . . . reduces cross-talk by 20 to 1. Six Philco tubes, including noise-reducing XXD Converter and Oscillator tube and famous Loktal tubes. Philco Built-In Super Aerial System. 6 Electric Push-Buttons; five for favorite stations plus one for "On-Off." Beam Power Pentode Audio System. Powerful Oval Shape Electro-Dynamic speaker. 3-Color Inclined Illuminated Horizontal Dial. Automatic Volume Control. Covers Standard American Broadcasts, Day and Night American and Foreign Short-Wave Stations and State Police Calls. Walnut Table Cabinet of new, modern design. *Cabinet dimensions: 9" high, 15" wide, 8 $\frac{1}{4}$ " deep.*

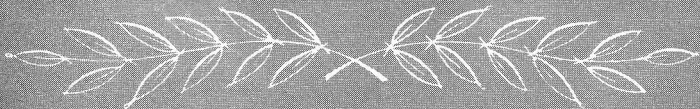
Price 34⁹⁵



PHILCO 323T. New Philco AC-DC Double I.F. Radio Circuit; reduces noise by 5 to 1 . . . increases sensitivity by 4 to 1 . . . reduces cross-talk by 20 to 1. Six Philco tubes, including noise-reducing XXD Converter and Oscillator tube and famous Loktal tubes. Built-In Super Aerial System. Powerful 6-inch Oval Electro-Dynamic Speaker. Beam Power Pentode Audio System. 3-Color Inclined Illuminated Horizontal Dial. Automatic Volume Control. Covers Standard American Broadcasts, Day and Night American and Foreign Short-Wave Stations, and State Police Calls. Entirely new Table Cabinet of Walnut woods, Zebrano graining and a leather-effect shark graining. *Cabinet dimensions: 8 $\frac{7}{8}$ " high, 13 $\frac{3}{4}$ " wide, 8 $\frac{3}{8}$ " deep.*

Price

24 ⁴⁵



PHILCO 322T. Philco AC-DC Superheterodyne Circuit, newly designed and extremely sensitive. Six Philco tubes, including Loktal tubes, invented by Philco engineers. R.F. Stage; Noise-Excluding Signal Amplifier reduces noise and greatly increases sensitivity. New Philco Built-In Super Aerial System. Powerful 6-inch Oval Electro-Dynamic Speaker; brings an amazing increase in speaker efficiency without increase of cabinet space. Beam Power Pentode Audio System. 3-Color Illuminated Horizontal Dial. Automatic Volume Control. Covers Standard American Broadcasts, Day and Night American and Foreign Short-Wave Stations and State Police Calls. New Walnut Table Cabinet of pleasing design. *Cabinet dimensions: 8 $\frac{3}{8}$ " high, 13 $\frac{1}{2}$ " wide, 7 $\frac{3}{4}$ " deep.*

Price **29.95**

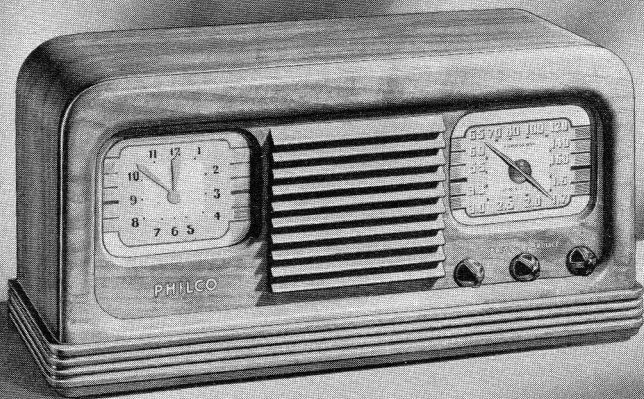
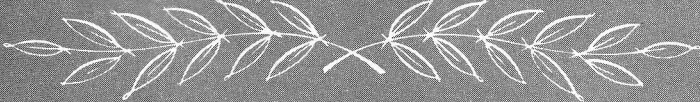


PHILCO 321T. Philco AC-DC Superheterodyne Circuit. Six Philco tubes, including Loktal tubes. R.F. Stage. Powerful 6-inch Oval Electro-Dynamic Speaker. 3-Color Inclined Illuminated Horizontal Dial. Beam Power Pentode Audio System. New Philco Built-In Super Aerial System. Automatic Volume Control. Covers Standard American Broadcasts. New, smart Walnut Table Cabinet with front panel of V-Matched Mahogany. *Cabinet dimensions: 7 $\frac{7}{8}$ " high, 13 $\frac{3}{8}$ " wide, 6 $\frac{5}{8}$ " deep.*

Price 27 93

PHILCO 321 IVORY. This model is identical with Philco 321T in features and performance. It is housed in a sliced Walnut cabinet with V-Matched Mahogany front panel and Ivory-Finished Bezel, Knobs and Trim . . . combining the beauty of handsomely grained woods with accents of gleaming ivory. *Cabinet dimensions: 7 $\frac{7}{8}$ " high, 13 $\frac{3}{8}$ " wide, 6 $\frac{5}{8}$ " deep.*

Price 27 93



PHILCO 22CL. Philco Radio and Sessions self-starting, precision-built Electric Clock. Radio features include: Powerful Superheterodyne Circuit; newly designed and extremely sensitive. Six Philco tubes, including famous Loktal tubes, invented by Philco. Costly R.F. Stage; Noise-Excluding Signal Amplifier reduces noise level and greatly increases sensitivity. Built-In Super Aerial System. Beam Power Pentode Audio System. Electro-Dynamic Speaker. Automatic Volume Control. Full-Vision Illuminated Dial. Covers Standard American Broadcasts, State and City Police Calls, Amateur and Night Aircraft Calls. Smartly designed table cabinet of costly Walnut woods, with panel of Walnut louvers separating radio and clock. *Cabinet dimensions: 7 $\frac{5}{8}$ " high, 15 $\frac{1}{8}$ " wide, 6 $\frac{7}{8}$ " deep.*

Price

29.95

NEW 1942

PHILCO

TRANSITONE

Compact Radios

**Finer Tone and
Performance...
Greater Power...
Thrilling New
Cabinet Beauty!**

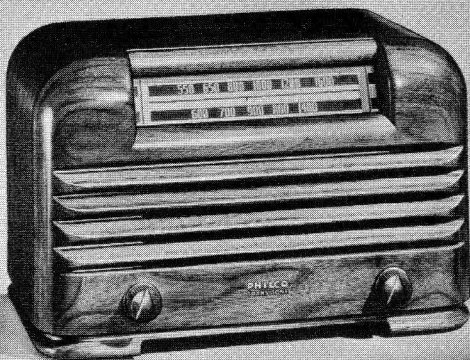


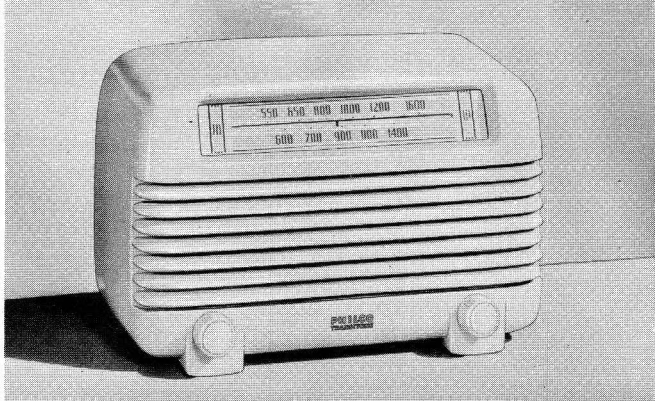
PT-10. AC-DC Superheterodyne Circuit. 6 Philco tubes, including famous Loktal tubes. R.F. Stage. Powerful 6-inch Oval Speaker. Beam Power Amplification. Improved, Larger Built-In Loop Aerial. 3-Color Illuminated Horizontal Dial. Covers full Standard American Broadcast range up to 1600 kilocycles. Walnut color plastic cabinet. Approved by U. L. $7\frac{1}{4}$ " high, $11\frac{3}{8}$ " wide, 6" deep.

Price *# 17.75*

PT-7. AC-DC Superheterodyne Circuit. 5 Philco tubes, including famous Loktal tubes. Powerful 6-inch Oval Speaker. Improved, Larger Built-In Loop Aerial. Beam Power Amplification. 3-Color Illuminated Horizontal Dial. Covers full Standard American Broadcast range up to 1600 kilocycles. Approved by U. L. New, streamline Walnut cabinet. $7\frac{3}{4}$ " high, $12\frac{1}{4}$ " wide, $6\frac{3}{4}$ " deep.

Price *# 17.75*





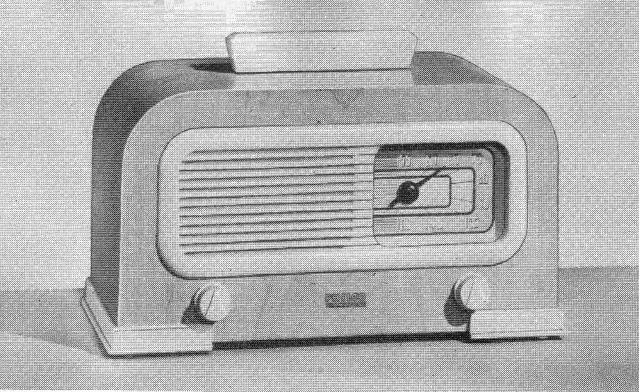
PT-4. AC-DC Superheterodyne Circuit. 5 Philco tubes, including Loktal tubes. Powerful 6-inch Oval Speaker. 3-Color Illuminated Horizontal Dial. Improved, Larger Built-In Loop Aerial. Beam Power Amplification. Covers full Standard American Broadcast range up to 1600 kilocycles. Streamlined ivory plastic cabinet. Approved by U. L. $7\frac{1}{4}$ " high, $11\frac{3}{8}$ " wide, 6" deep.

Price *16.95*

PT-2. AC-DC Superheterodyne Circuit. 5 Philco tubes, including Loktal tubes. Powerful 6-inch Oval Speaker. Beam Power Amplification. Improved, Larger Built-In Loop Aerial. 3-Color Illuminated Horizontal Dial. Covers full Standard American Broadcast range up to 1600 kilocycles. Walnut color plastic cabinet. Approved by U. L. $7\frac{1}{4}$ " high, $11\frac{3}{8}$ " wide, 6" deep.

Price *14.95*



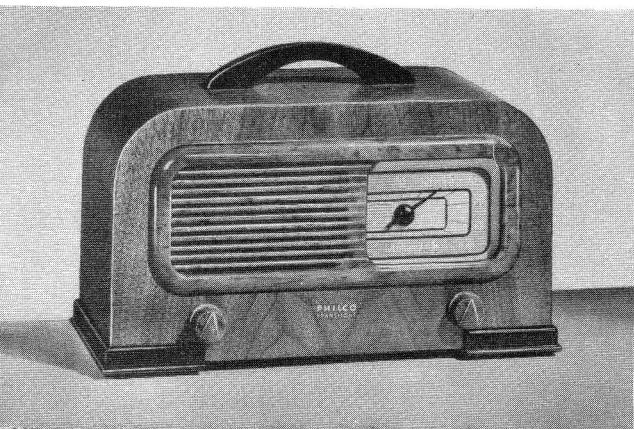


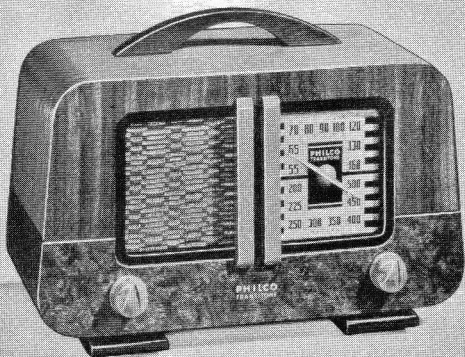
PT-95. AC-DC Superheterodyne Circuit. 5 Philco tubes, including Loktal tubes. Beam Power Amplification. Built-In Loop Aerial. Full-Vision Dial. Super Sensitive, High-Output Speaker. Automatic Volume Control. Covers Standard American Broadcast range up to 1600 kilocycles. Walnut cabinet with ivory plastic trim. Approved by U. L. $8\frac{1}{4}$ " high, 13" wide, $6\frac{3}{8}$ " deep.

Price 22.50

PT-94. AC-DC Superheterodyne Circuit. 5 Philco tubes, including Loktal tubes. Beam Power Amplification. Built-In Loop Aerial. Full-Vision Dial. Super Sensitive, High-Output Speaker. Automatic Volume Control. Covers Standard American Broadcast range up to 1600 kilocycles. Walnut wood cabinet with brown mottled plastic bezel. Approved by U. L. $8\frac{1}{4}$ " high, 13" wide, $6\frac{3}{8}$ " deep.

Price 21.50



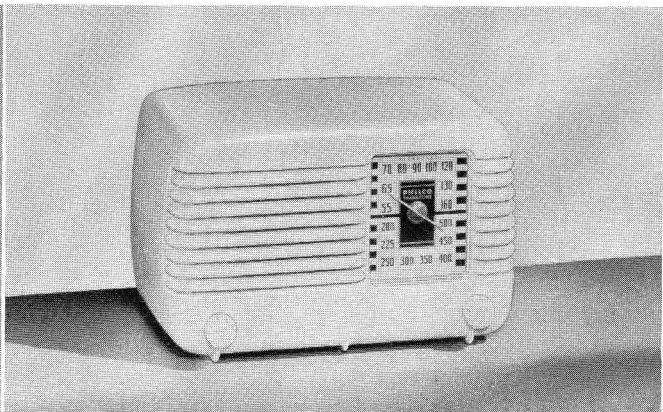


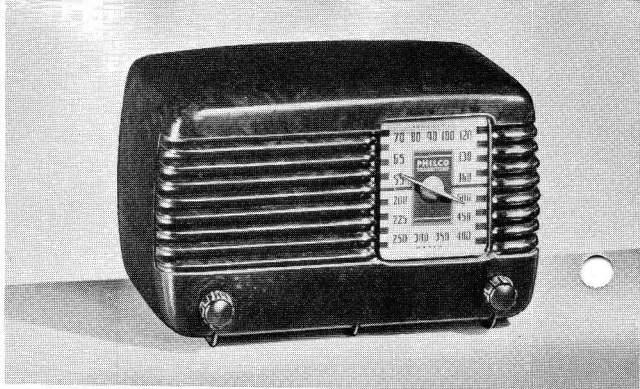
PT-93. AC-DC Superheterodyne Circuit. 5 Philco tubes, including Loktal tubes. Beam Power Amplification. Built-In Loop Aerial. Full-Vision Dial. Super Sensitive, High-Output Speaker. Automatic Volume Control. Covers full Standard American Broadcast range up to 1600 kilocycles. New Walnut and Cocoa wood cabinet. Approved by U. L. $8\frac{1}{8}$ " high, $11\frac{3}{4}$ " wide, 6" deep.

Price 17⁵⁰

PT-92. AC-DC Superheterodyne Circuit. 5 Philco tubes, including Loktal tubes. Beam Power Amplification. Built-In Loop Aerial. Full-Vision Dial. Super Sensitive, High-Output Speaker. Automatic Volume Control. Covers full Standard American Broadcast range up to 1600 kilocycles. Glistening ivory-white color plastic cabinet. Approved by U. L. $6\frac{1}{4}$ " high, $10\frac{1}{4}$ " wide, $5\frac{3}{4}$ " deep.

Price 19⁷⁵





PT-91. AC-DC Superheterodyne. 5 Philco tubes, including Loktals. Beam Power Amplification. High-Output Speaker. Full-Vision Dial. Built-In Loop Aerial. Automatic Volume Control. Covers full Standard American Broadcast range up to 1600 kilocycles. Plastic cabinet of rich walnut color. Approved by U. L. $6\frac{1}{4}$ " high, $10\frac{1}{4}$ " wide, $5\frac{3}{4}$ " deep.

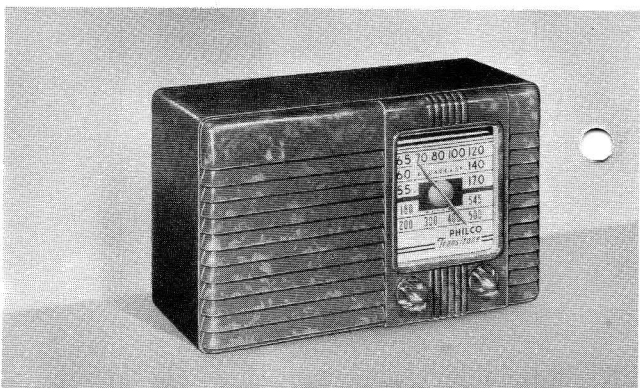
Price 13.75

PT-25. Attached Aerial—no ground. AC-DC Superheterodyne. 5 Loktal tubes. Automatic Volume Control. High-Output Speaker. Full-Vision Dial. Covers Standard American Broadcasts and State Police Calls. Brown plastic cabinet. Approved by U. L. $5\frac{3}{8}$ " high, $8\frac{1}{2}$ " wide, 4" deep.

Price 7.45

PT-26. Same as PT-25 but with Built-In Loop Aerial and with Broadcast Range up to 1600 kilocycles.

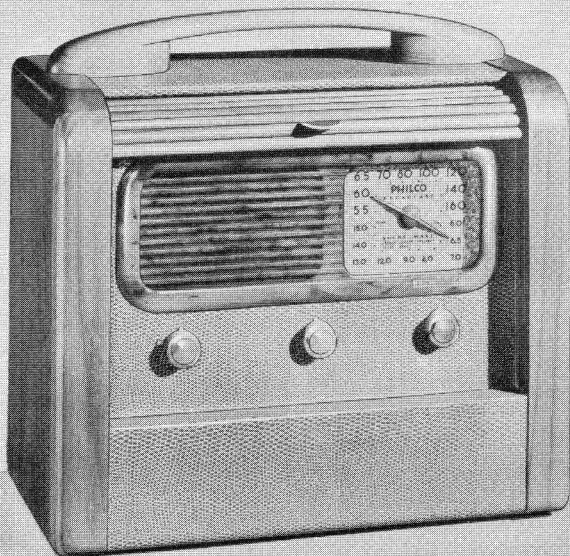
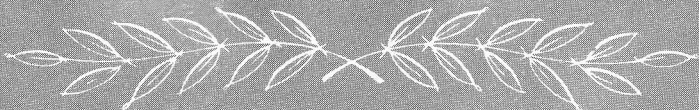
Price 11.95





NEW 1942
PHILCO
PORTABLE
RADIOS

**The Most Powerful
Portable Radios
Ever Built!**

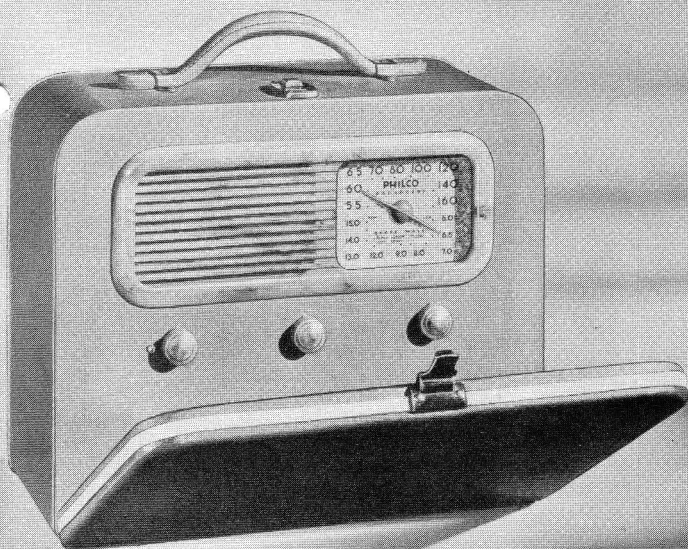
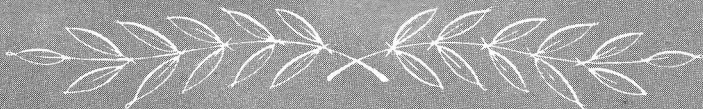


PHILCO 854T. New, Super-Powerful Portable Radio Circuit with two I.F. Stages. Seven Philco tubes, including noise-reducing Converter tube, new Loktal tubes. Pentode Audio System. Plays anywhere on self-contained battery or any AC or DC house current. No aerial or ground wires needed. Highly Sensitive, High-Output Speaker. Low Impedance Built-In Loop Aerial. Powerful American and Foreign Short-Wave Reception. New Full-Vision Dial. Exquisite Walnut case with solid Walnut handle and Walnut Tambor door. *Dimensions: 11 $\frac{1}{8}$ " high, 13 $\frac{7}{8}$ " wide, 7 $\frac{1}{4}$ " deep.*

Price 49.25

PHILCO 844T. Housed in same cabinet, this model, designed for Standard American Broadcasts only, has all the other features and powerful performance of the 854T. *Dimensions: 11 $\frac{1}{8}$ " high, 13 $\frac{7}{8}$ " wide, 7 $\frac{1}{4}$ " deep.*

Price 42.50

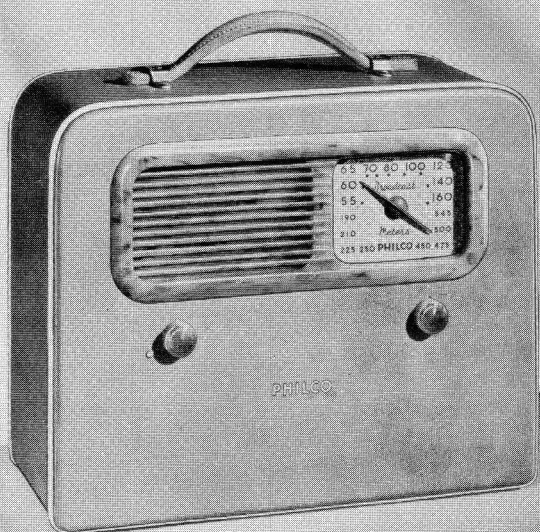
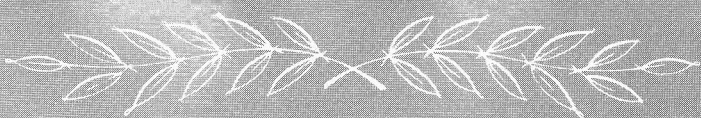


PHILCO 853T. New, Super-Powerful Portable Radio Circuit with two I.F. Stages. Seven Philco tubes, including noise-reducing Converter tube, new Loktal tubes. Pentode Audio System. Plays anywhere on self-contained battery or any AC or DC house current. No aerial or ground wires needed. Highly Sensitive, High-Output Speaker. Low Impedance Built-In Loop Aerial. Powerful American and Foreign Short-Wave Reception. New Full-Vision Dial. Handsome new case covered in pigskin graining with ivory piping. Detachable drop-front. *Dimensions: 10 $\frac{3}{4}$ " high, 13 $\frac{1}{2}$ " wide, 7" deep.*

Price 72.50

PHILCO 843T. This model, designed for Standard American Broadcasts only, has all the other features and powerful performance of the 853T. The case is covered in new, smart cowhide graining, with detachable drop-front. *Dimensions: 10 $\frac{3}{4}$ " high, 13 $\frac{1}{2}$ " wide, 7" deep.*

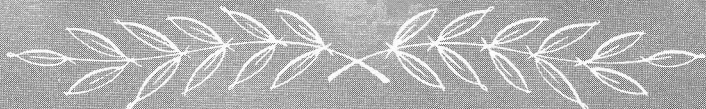
Price 39.95



PHILCO 842T. New, Super-Powerful Portable Radio Circuit with two I.F. Stages for extreme sensitivity and selectivity. Seven Philco tubes, including noise-reducing Converter tube, new Loktal tubes. Pentode Audio System. Plays anywhere on self-contained battery or any AC or DC house current. No aerial or ground wires needed. Highly Sensitive High-Output Speaker. Low Impedance Built-In Loop Aerial. Covers Standard American Broadcasts. New Full-Vision Dial. New, smartly designed case covered in cowhide graining with ivory piping, attractive marbled plastic bezel, real leather handle. *Dimensions: 10 $\frac{3}{4}$ " high, 13 $\frac{1}{2}$ " wide, 6 $\frac{1}{4}$ " deep.*

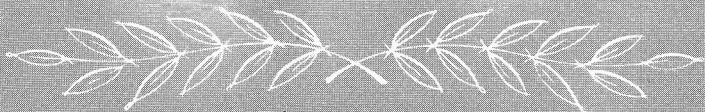
Price

32⁸⁰



PT-88. Plays anywhere on self-contained, long-life battery or any AC or DC house current. No aerial or ground wires needed. Powerful 5-tube circuit gives finer tone, greater volume, more sensitive performance than has ever been possible in portable radios at the amazingly low price. Large Built-In Loop Aerial. Highly Efficient, High-Output Speaker. Easy-to-read Full-Vision Dial. Covers full Standard American Broadcast range up to 1600 kilocycles. Handsome case of pigskin graining with ivory piping, detachable drop-front, real leather handle. Space at bottom holds battery. Perfect balance makes this compact, lightweight portable easier to carry. Underwriters' Approval. *Dimensions: 9 $\frac{3}{8}$ " high, 10 $\frac{3}{4}$ " wide, 5 $\frac{3}{4}$ " deep.*

Price 25.00



PT-87. Plays anywhere on self-contained, long-life battery or any AC or DC house current. No aerial or ground wires needed. Powerful 5-tube circuit gives finer tone, greater volume, more sensitive performance than has ever been possible in portable radios at this lowest price. Large Built-In Loop Aerial. Highly Efficient, High-Output Speaker. Easy-to-read Full-Vision Dial. Covers full Standard American Broadcast range up to 1600 kilocycles. Smart case of cowhide graining, with ivory piping. Real leather handle; plastic bezel. Space at bottom holds battery. Perfect balance makes this compact, lightweight portable easier to carry. Underwriters' Approval. *Dimensions: 9 $\frac{3}{8}$ " high, 10 $\frac{3}{4}$ " wide, 4 $\frac{7}{8}$ " deep.*

Price 19.95

NEW 1942

PHILCO

FARM

RADIOS

**No Aerial or
Ground Wires
To Install!**

Another Amazing Philco Farm Radio Achievement

NEW PHILCO BUILT-IN FARM RADIO AERIAL SYSTEM

Think of it! No aerial or ground wires to install outside or inside . . . thanks to the amazing new Philco Built-In Farm Radio Aerial System. Fine, clear reception, day and night, on both Standard and Short-Wave Stations. And, in most cases, *better* reception than you get with an outside aerial. Because you can actually point the Philco Built-In Aerial to the station you want, bringing it in more clearly than ever before and tuning out noise and interference from other stations. Yes, it's another amazing contribution by Philco engineers to farm radio tone, performance and convenience!

Only Philco Has It!

NEW 1½ VOLT FARM RADIO CIRCUIT

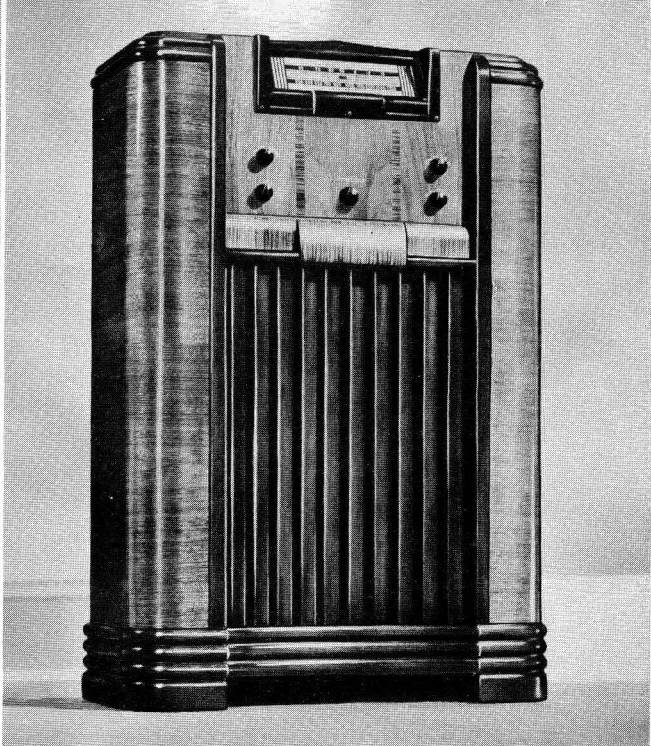
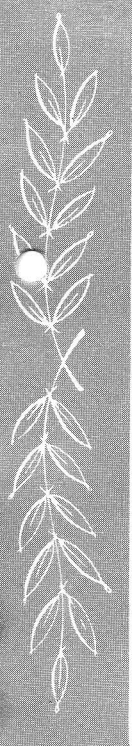
... gives 3 times greater sensitivity ...

4 times sharper selectivity than ever before!

First, Philco engineers invented the 1½ volt farm radio circuit that did away with troublesome and expensive storage batteries. Now, Philco engineers add amazing new developments to that circuit that give you 3 times greater sensitivity and 4 times sharper selectivity than ever before! Yes, sensational inventions that only Philco owners may enjoy . . . and at amazingly low prices, the greatest values for your money ever offered in farm radio history!

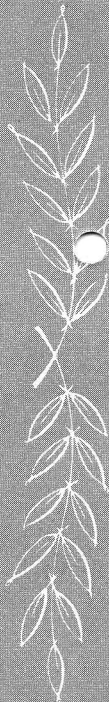
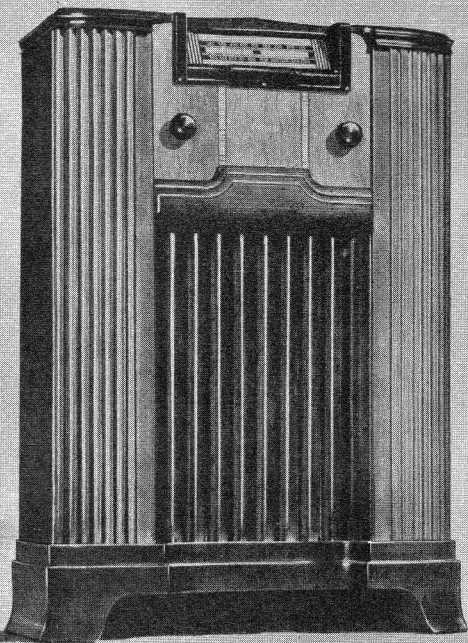
HANDSOME NEW CABINETS

In addition, a wide selection of lovely cabinets is yours . . . large, impressive consoles and modern table cabinets, styled with beauty and grace of design. A source of pride and pleasure in any home!



PHILCO 125K. New $1\frac{1}{2}$ Volt Farm Radio Circuit. Five Philco Farm Radio Tubes, including noise-reducing XXB Converter tube and LB-4 tube. New Philco Built-In Farm Radio Aerial System. Adapted for use with Philco Farm Radio Aerial where necessary for powerful daytime reception of long-distance stations. Special Molded Bakelite Tube Sockets. New, Positive-Action "On-Off" Flag. Covers Standard American Broadcasts, American Short-Wave Stations and Day and Night Foreign Stations from 5.7 to 15.5 megacycles, Ships and 1st Class Amateur Stations. High-Output Farm Radio Speaker. 3-Point Tone Control. Automatic Bass Compensation. New, Improved Inclined Horizontal Dial. Single Extra-Long-Life Battery Block fits inside cabinet. Beautiful cabinet of costly Walnut woods. *Cabinet dimensions: $37\frac{3}{4}$ " high, 27" wide, $10\frac{3}{8}$ " deep.*

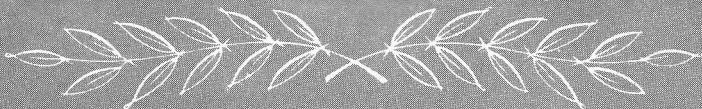
Price 69.95



PHILCO 123F. Famous $1\frac{1}{2}$ Volt Farm Radio Circuit, invented by Philco engineers and introduced to the farm radio field by Philco. Five Philco Farm Radio Tubes specially designed for low current drain, include famous Loktal tubes. Phase-Inverted Push-Pull Pentode Audio System. High-Output Farm Radio Speaker. New, Improved Inclined Horizontal Dial. Special Molded Bakelite Tube Sockets. New, Positive-Action "On-Off" Flag. Automatic Volume Control. Single, Extra-Long-Life Battery Block. Covers Standard American Broadcasts and State Police Calls. Newly-designed Console Cabinet with exquisitely grained Walnut panels and graceful overlays. *Cabinet dimensions: $36\frac{3}{4}$ " high, $26\frac{5}{8}$ " wide, $10\frac{5}{8}$ " deep.*

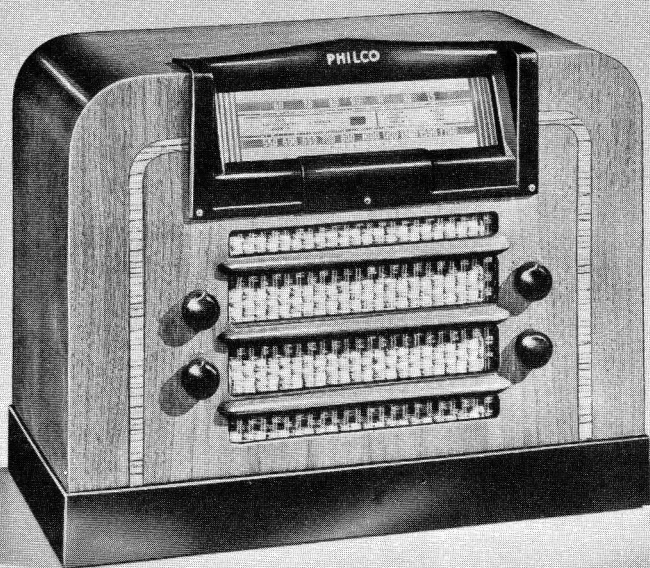
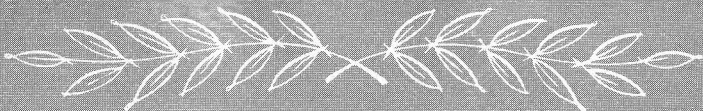
Price.....

52.90



PHILCO 126T. New, $1\frac{1}{2}$ Volt Farm Radio Circuit. Six Philco Farm Radio Tubes, including 2 noise-reducing LB-3 Converter tubes and LB-4 tube. New Philco Built-In Farm Radio Aerial System. Adapted for use with Philco Farm Radio Aerial where necessary for powerful daytime reception of long-distance stations. 6 Electric Push-Buttons. Special Molded Bakelite Tube Sockets. Covers Standard American Broadcasts, American Short-Wave Stations and Day and Night Foreign Stations from 5.7 to 15.5 megacycles, Ships and 1st Class Amateurs. High-Output Farm Radio Speaker. 3-Point Tone Control. Automatic Volume Control. Automatic Bass Compensation. New, Improved Inclined Horizontal Dial. New, Positive-Action "On-Off" Flag, uses no current. Single, Extra-Long-Life Battery Block; fits inside cabinet. Handsome, full size Walnut Table Cabinet. *Cabinet dimensions: $13\frac{3}{4}$ " high, $20\frac{1}{4}$ " wide, 10" deep.*

Price 57.50



PHILCO 124T. New $1\frac{1}{2}$ Volt Farm Radio Circuit. Five Philco Farm Radio Tubes, including noise-reducing XXB Converter tube and LB-4 tube. New Philco Built-In Farm Radio Aerial System. Adapted for use with Philco Farm Radio Aerial where necessary for powerful daytime reception of long-distance stations. Special Molded Bakelite Tube Sockets. New, Positive-Action "On-Off" Flag. High-Output Farm Radio Speaker. 3-Point Tone Control. Automatic Volume Control. Automatic Bass Compensation. Improved Inclined Horizontal Dial. Single, Extra-Long-Life Battery Block, concealed inside cabinet. Covers Standard American Broadcasts, American Short-Wave Stations and Day and Night Foreign Stations from 5.7 to 15.5 megacycles, Ships and 1st Class Amateurs. New, Large Walnut Table Cabinet. *Cabinet dimensions: $13\frac{1}{2}$ " high, 18" wide, $8\frac{7}{8}$ " deep.*

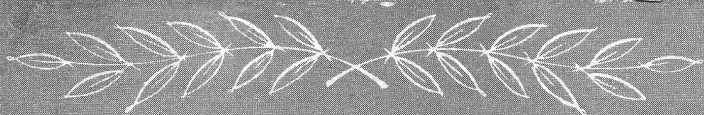
Price 77.⁹⁵



PHILCO 122T. Famous $1\frac{1}{2}$ Volt Farm Radio Circuit. Five Philco Farm Radio Tubes, specially designed for low current drain, include famous Loktal tubes. Phase-Inverted Push-Pull Pentode Audio System. Special Molded Bakelite Tube Sockets. High-Output Farm Radio Speaker. Single, Extra-Long-Life Battery Block concealed from sight within the cabinet. New, Improved Inclined Horizontal Dial. New, Positive-Action "On-Off" Flag. Automatic Volume Control, Covers Standard American Broadcasts and State Police Calls. New, Large Table Cabinet, beautiful in appearance, modern in design; built of costly sliced Walnut woods with Zebrano graining overlay. *Cabinet dimensions: $11\frac{1}{2}$ " high, $17\frac{1}{2}$ " wide, 9" deep.*

Price

37.50



PHILCO 121CB. Famous $1\frac{1}{2}$ Volt Farm Radio Circuit. Four Philco Farm Radio Tubes, new Loktal tubes specially designed for low current drain. Special Molded Bakelite Tube Sockets. Concealed Standard Battery Block specially designed and built for this particular Philco Farm Radio. Concealed within the cabinet, out of the way and out of sight. Automatic "On-Off" Flag. High-Output Farm Radio Speaker. New, Improved Inclined Horizontal Dial. Automatic Volume Control. Covers Standard American Broadcasts and State Police Calls. Handsome Plastic Table Cabinet, modern in design, large . . . a real, *full-size* table radio, in a rich walnut shade. *Cabinet dimensions: $10\frac{1}{4}$ " high, $13\frac{7}{8}$ " wide, $6\frac{5}{8}$ " deep.*

Price 29.95